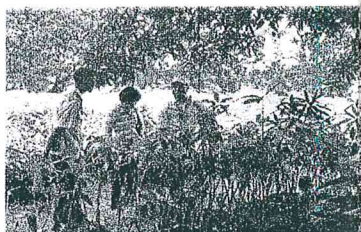
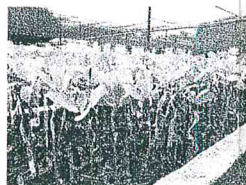


Production Support System

- Production of quality planting materials (mango and other high value crops)
- Production of OPV glutinous corn, saline tolerant and drought resistant rice and selected vegetable seeds for buffstocking.
- Maintenance of production support facilities (nursery, greenhouse, screenhouse, foundation scion grove).
- Evaluation and accreditation of promising mother trees (MT).
- Conduct survey and evaluation and recommend for accreditation/re-accreditation of potential nursery operators.



PRODUCTS AND SERVICES OFFERED

Products and Materials Provided:

- 1) Quality Planting Materials
 - a) Grafted mango (Golez strain, GES 77, GES 84 & GES 85)
 - b) Mango scion Golez strain, GES 77, GES 84 & GES 85)
 - c) Grafted cashew
 - d) Other selected fruit trees
 - e) Selected vegetable seeds (squash, ampalaya, pole sitao, cow pea)
 - f) Botanical plants
- 2) Information, education and Communication (IEC) materials
 - a) brochures or leaflets on mango production and processing (hard and e-copies)

3) Biocon Agents

- a) Beauveria bassiana
- b) Metarhizium anisopliae
- c) Chilochorus nigrita

4) Others

- a) Fruit fly traps (with methyl eugenol)
- b) Biocon trap

Services Offered:

- 1) Conduct collaborative and cooperative experiment on mango.
- 2) Technical assistance (farm visit, technical consultation, technical briefing, pest diagnosis, research evaluator).
- 3) Farm practice or On-the Job Training (for student)
- 4) Conduct of technology demonstrations
 - a) mango propagation (cleft grafting)
 - b) mango processing
 - c) mango bagging
 - d) Mushroom production
 - e) medicinal herbs utilization
- 5) Conduct of training and seminar
 - a) Good Agricultural Practices (GAP) on mango
 - b) mango propagation, nursery management, production, integrated pest management (IPM), harvest and post-harvest handling and processing.
 - c) Mushroom production
 - d) medicinal herbs utilization and processing

For more information, please contact:

DA/Bureau of Plant Industry
Guimaras National Crop Research, Development & Production Support Center
San Miguel, Jordan, 5045 Guimaras, Philippines
Telefax No: (033) 581-2034
E-mail: bpi.guimaras@gmail.com

BPI-GNCRDPSC PROFILE



DEPARTMENT OF AGRICULTURE
BUREAU OF PLANT INDUSTRY

**GUIMARAS NATIONAL CROP RESEARCH,
DEVELOPMENT AND PRODUCTION
SUPPORT CENTER**

San Miguel, Jordan, Guimaras
Philippines

BPI-Guimaras NCRDPSC

... is the latest crop center included in the family of Bureau of Plant Industry, specializing in mango and other high value crops.

Background information:

Year established - 1969

Previous names

1970 - Guimaras Mango and Coconut Station

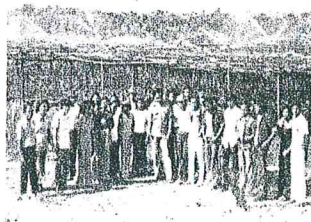
1972 - Guimaras Seed Farm

1977 - Guimaras Horticultural Research Station

1980 - Guimaras Experiment Station

1993 - National Mango Research & Development Center, through DA Order No. 1, Series of 1993 signed by DA Sec. Roberto S. Sebastian

2015 - Guimaras National Crop Research, Development and Production Support Center



Land Area

Main compound - 8.872 ha. (San Miguel, Jordan)

Satellite stations:

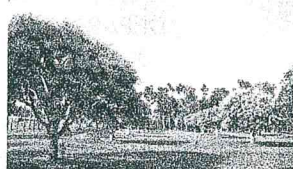
5 ha. - Piña, Buenavista

1 ha. - Mclain, Buenavista

V
I
S
I
O
N



M
I
S
S
I
O
N



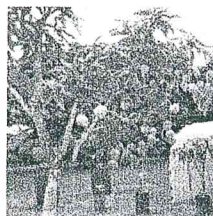
GNCRDPS is a recognized and leading Research, Development and Production Center on mango and other high value crops.

We generate crop farming technologies and produce quality seeds on mango and other high value crops to ensure sustainable food production.

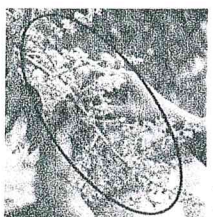
MAJOR FUNCTIONS OF THE CENTER

Research and Development

Generate and develop cost-effective and applicable production technologies to enhance productivity and export of quality fruits. This include disciplines on:

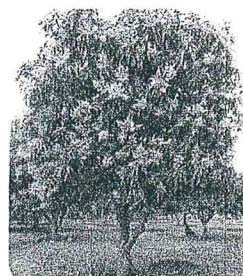


- Plant Genetic Resources (PGR) - Genebanking of different mango, cashew and pigeon pea varieties through collection, conservation, characterization, evaluation and documentation.



- Varietal improvement - Breeding/Selection of improved strains of 'Carabao' mango.
- Propagation - Multiplication of planting materials through appropriate research technologies.

- Cultural management - Pruning, fertilization, irrigation, flower induction, flower and fruit management.



- Post-harvest handling - Proper harvesting based on maturity indices, post-harvest handling, disinfestations and packaging.

- Crop protection - Survey and pest monitoring, biology, pesticide screening, Integrated Pest Management (IPM) and biological control.



Implement activities to enhance technology promotion and dissemination, technical and material assistance, linkages and manpower capacity building.

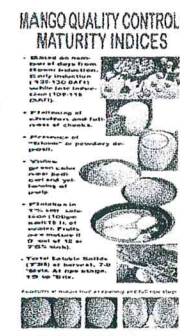
- Information dissemination on packaged of technologies through establishments of techno-demo farms, seminars, trainings and lecture/demo.



- Participation to information campaigns, i.e. techno-fora, caravan, field days, agri-trade fairs and exhibits.

- Development and distribution of IEC materials of packaged technologies on mango production.

- Provision of seeds/plant materials and insect specimens or cultures for research purposes.



- Provide technical assistance through consultations and farm visits, as research evaluator and thesis adviser for undergraduate and graduate students.

- Linkages with research institutions, line agencies, SUCs, LGUs, NGOs and POs.



- On-the-Job training and farm practice for students (college and high school) on mango production and processing.

Production Support System

- Distribution of quality planting materials

